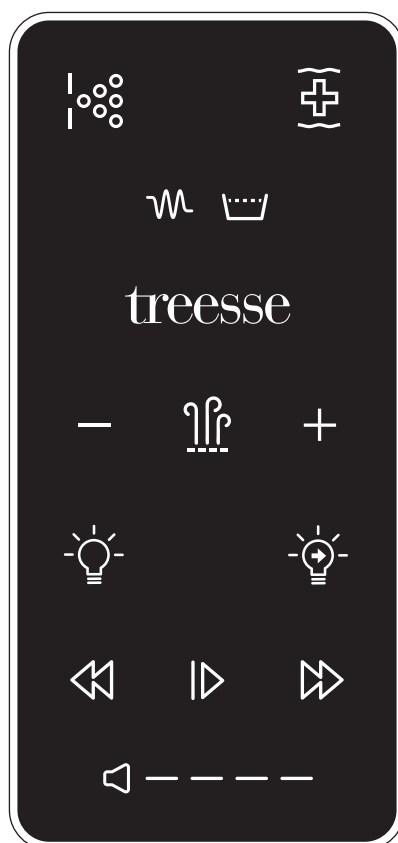


HYDROMASSAGE TUBS



ATC System

Instructions for use

Dear Customer,

Thank you for choosing a Tressse product. Welcome to our world of total well-being.

We would like to remind you that all our products are built with top quality materials and are carefully tested according to safety standards.

This guarantee of quality and comfort is accompanied by strong innovation and sought-after design.

All we need to do now is wish you happy relaxation!

Gruppo TreS S.p.a.

tressse

_INDEX

• FOREWORD	4
• PRODUCT OVERVIEW	7
• PRELIMINARY OPERATIONS	8
• GENERAL OPERATION	9
• RADIO REMOTE CONTROL - HOW TO USE	10
• DISINFECTION	13
• CLEANING AND MAINTENANCE	14

_FOREWORD

THE OPERATION AND MAINTENANCE MANUAL

This manual has been prepared to help you make the best use of your TREESSE product in complete safety, avoiding conditions that may void your warranty.

This manual is of fundamental importance, therefore it must be carefully kept, for any future consultation.

Before using and servicing the equipment, please read this manual carefully and keep it in a safe place to be consulted by the operators.

If there are any missing parts, contact the Manufacturer for additional explanation.

Interventions, tampering with or alterations not expressly approved in this manual, which do not comply with the provisions laid down in this manual may lead to damages, injuries or death and will void the warranty. If the tub is used or serviced in a manner different from that shown in this manual may result in the cancellation of the warranty.

Treesse reserves the right to change the product as it deems appropriate without prior notice or replacement.

GENERAL SAFETY INSTRUCTIONS

- Before carrying out any installation or maintenance work disconnect the appliance from the electricity supply and from the water supply.
- Avoid placing on the surfaces of the tub any object or substance that might damage them.
- Do not place any electrical devices such as hair dryers, lights, radios, telephones or TV sets at a distance of less than 1.5 m from the tub.
- Don't jump in the tub: risk of severe injury and damage to the structural features of the equipment. The water inside of the tub must never exceed 40°C to avoid hyperthermia.
- Water temperatures between 38° and 40°C are still considered safe for a healthy adult. Lower temperatures are recommended for extended use (exceeding 10 minutes), for children or if you are alone.
- To minimize risks, always check the water temperature with your hand to see if it is conformable before allowing the children to get into the tub.
- Pregnant women or those who suspect a pregnancy should consult a doctor before using the tub.
- People with infectious diseases either of the skin or contagious, should not use the tub.
- People with health problems should consult a physician before using the tub, particularly those suffering from obesity, heart disease, low or high blood pressure, circulatory problems, diabetes, bleeding problems, pregnant women, etc. ..
- The use of drugs, alcohol, drugs, medicines before or during the use of the tank may result in unconsciousness and consequent drowning.
- To reduce the risk of injury, do not allow children under the age of 8 years, to persons with reduced mental and sensory capacities or lack of experience to use the minipool without constant surveillance. Do not allow children to play with the tub.

_ HYDRAULIC SETUP

Water connection must be used solely for the hot tub (never connect other equipment to the same) and made by means of new hoses and fittings, which were never used before.

You should ONLY use tap water because it guarantees microbiological purity and the absence of metallic particles or organic substances.

On the contrary, well water typically contains these substances which can cause algae proliferation and severe damage to the tub. If you don't have access to municipal water mains, install filters (filtration no less than 50 microns) upstream of the water line, and metal retainers that ensure specifications comparable to those of tap water.

Where applicable, the minimum water supply pressure must be of 150 kPa (1.5 bar), while the maximum value should be 300 kPa (3 bar).

The company denies all liability for problems resulting from failure to install the latter.

_ ELECTRICAL SETUP

Treesse hot tubs are built in compliance with European (EN 60 335-2-60) laws and are tested during manufacturing to ensure safety of both the installer and the user. The electrical setup must be made by a qualified electrician.

All electrical connections must be performed after having disconnected the power supply of the building.

Wiring must be:

performed in a **fixed and permanent manner**, without any intermediate connections, in accordance with the regulations in force in the Country of installation;

suitable for the current consumption of the hot tub (see technical specifications);

provided with a **conform grounding system** and connection to the fixed network must be permanent;

protected against water splashes, hence sheltered in a dedicated place, closed and protected against atmospheric agents;

controlled by an **omnipolar switch** with contact gap of at least 3 mm and a switching capacity of 60A (or otherwise suitable to the consumption of the tub);

controlled by a **differential switch not exceeding 30mA**.

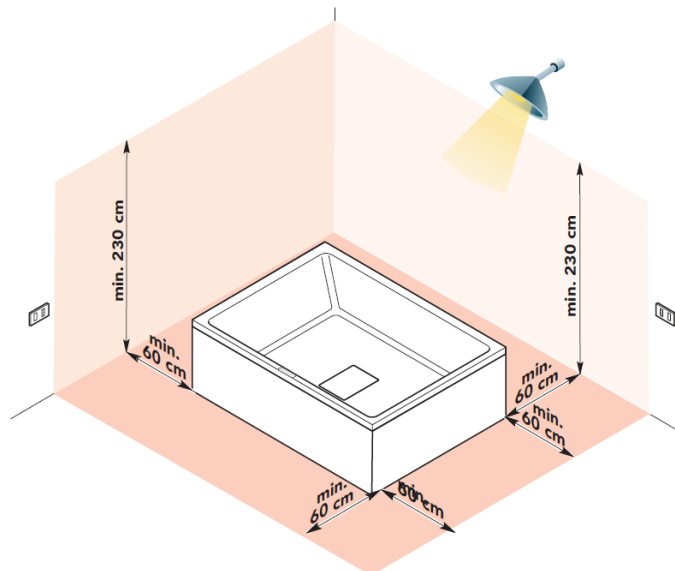
except for the parts powered at extra low safety voltage, not exceeding 12 V,

should not be accessible to a person in the hot tub.

The power cord of the control unit must be of three-lead type H05 (single-phase 220V) whose cross-sections are adequate for the power consumption of the hot tub (see the pre-installation sheet): its size depends on the absorbed current and the distance of the tank from the main power switchboard.

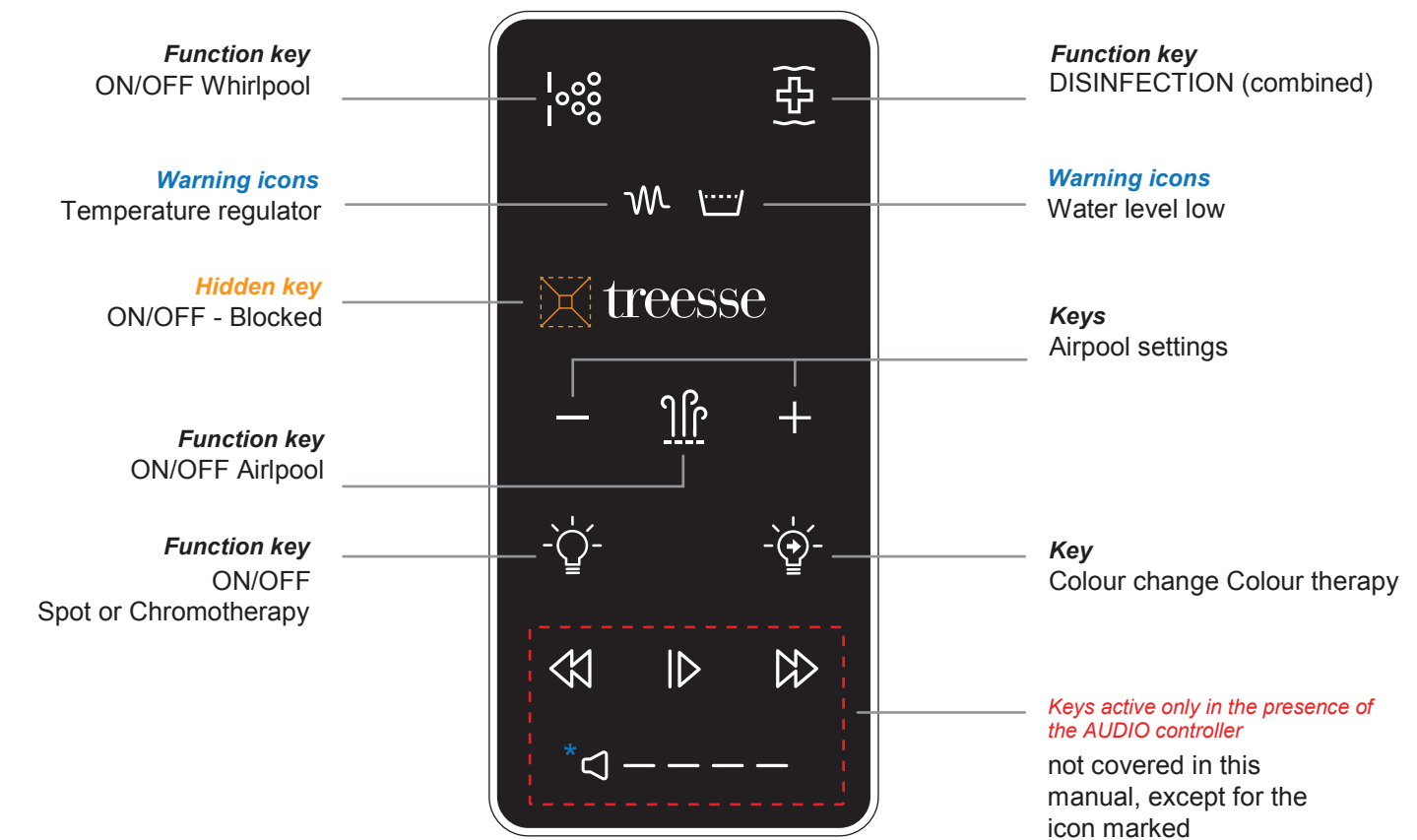
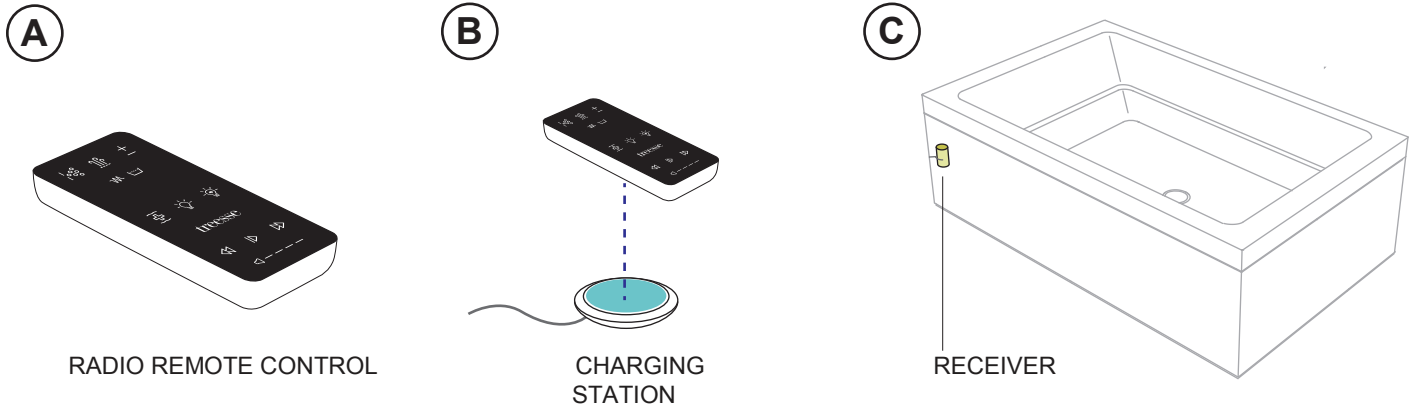
WARNING

The regulations prohibit any electrical installation (plug connector, switches, lamps, etc.) in the area surrounding the hot tub for a distance of at least 60 cm and a height of 230 cm.



_PRODUCT OVERVIEW

This device allows you to activate the tub functions in wireless mode by using the common radio waves. The kit consists of a radio remote control (A), a charging station (B) equipped with power cord, and a receiver (C) installed on the tub.



PRELIMINARY OPERATIONS

Radio control states

The remote control features the following operating modes:

- 1 **BLOCKED:** this is the mode used to prevent the integrated battery from switching on and, therefore, consuming it, during transport to the final customer. The backlight of the keys is turned off.
- 2 **READY:** The remote control comes with backlit keys on, ready for normal use.
 - 2a **STAND BY:** in the "Ready" state, it turns on if no movement was detected or by holding down the keys for 15 seconds and not on the charging station: all functions are off.
- 3 **NO-INIT:** *the remote control exited the BLOCKED mode but is not yet associated with the receiver, it has the minus key "-" lit. This situation does not occur because the remote control comes already associated with the receiver.*

Preliminary operations

The remote control comes in "BLOCKED" mode (1) and is already associated with the receiver.

To exit Blocked mode and switch to the Ready mode, proceed as follows:

- _ press the hidden key for about 3 seconds, or
- _ put the remote control on the charging station.

The remote control can be set to BLOCKED mode only by pressing the hidden key for at least 3 seconds.

The first start-up

Once you have activated the Ready mode (icons lit and active), the following 2 situations may occur:

- a) If the RECEIVER is powered (tub plugged in), the controller will automatically indicate the presence of the signal in a period of about 30 sec and will display the icons of all the functions available on the tub.
- b) If the RECEIVER is not powered (tub disconnected), the remote control will not indicate the presence of signal and will display only 3 blinking dashes of volume in blue at the bottom of the display, which indicate that the association signal is missing; once the receiver is powered, you will see the icons as described in section a).

ATTENTION: if the distance from the receiver is too great, the remote control will behave in the same way, signalling the absence of signal.

NB: *In the event of a power outage, you must place the remote control on the charging station to reactivate the keys.*

Stand by

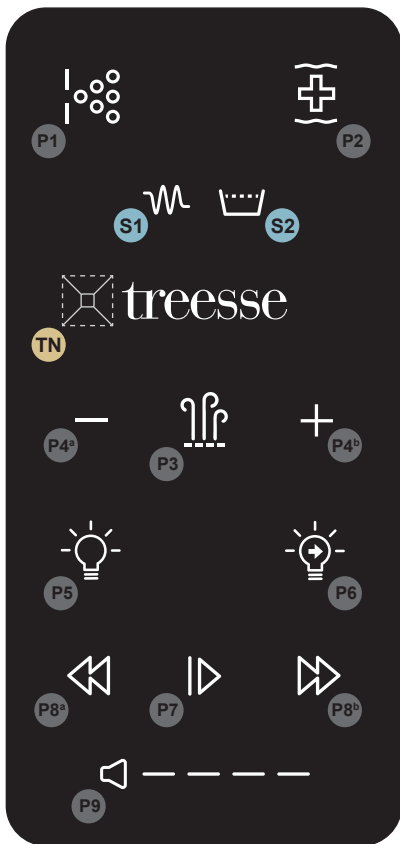
The remote control enters this state if:

- it fails to detect any movement or any pressure of the keys for 15 seconds;
- it is not charging.

To exit the STAND-BY mode and switch to active state, it suffices to move the remote control.

As soon as the movement is detected, the radio controller takes a few seconds to reconnect to the associated station; during this period, you will have the same "no signal" indication (3 volume dashes flashing blue); once the associated station is reconnected, the backlit of the keys resumes, showing the status of tub functions.

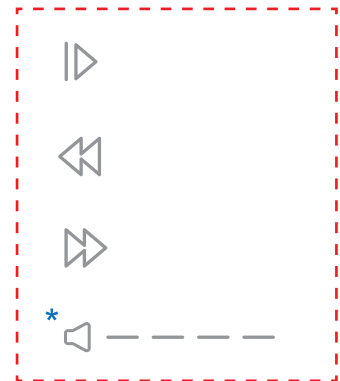
_GENERAL OPERATION



ICONS LEGEND

Function keys

- Key**
ON/OFF Whirlpool
- Key**
DISINFECTION (combined)
- Key**
ON/OFF Airpool
- Keys**
Airpool Settings
- Key**
Spot or Chromotherapy ON/OFF
- Key**
Chromotherapy Colour change
- Hidden key**
POWER
- LED signal**
Temperature regulator
- LED signal**
Water level low



Keys active only in the presence of the AUDIO controller, not included



LED signal

This icon (volume) also displays the charging status of the battery; it can be activated by exiting the standby mode.

General operation

A function can be activated and deactivated by pressing the key shortly upon release.

The function/warning icons are backlit in two colours, according to the following criteria:

Dimmed white icon > *function available non active*

Intense white icon > *function active*

Blue icon > *reporting active (only Led S1-S2 and icon P9)*

Charging

Place the remote control on the charging station, with the display facing up: during charging, the volume icon will display dashes (P9) in a progressive manner once only, then the remote control will display all functions of the associated tub.

Battery status, indicated by the icon P9 dashes (details on page 8), is visible for several seconds upon exiting from standby mode, when the backlight of the icons is reactivated.

RADIO REMOTE CONTROL - HOW TO USE

Key P1: With the power source connected and water level in the tub (5 cm above the level of the nozzles), pressing this button activates the **Whirlpool** function, the backlight of the icon switches from dimmed white to bright white. If you want to turn off the feature, press the key again or after 20 minutes of operation.



By pressing the key without having the proper water level in the tub, the function will not be activated and the icon will start flashing with the LEDs indicating the water level **S2**, flashing, too.

** If the system features a temperature regulator, key P1 controls its activation and deactivation, in relation to the tub, according to the following specifications: **ACTIVATION: after holding active the pump tub for at least 15 sec.***

POWER OFF: immediately after pressing the P1 button, which will keep on blinking with the hot tub still active for 30 seconds (to allow the cooling of the temperature regulator).

Key P2: Disinfection can be done only when all functions are disabled and the sensor detects the presence of water in the tub.



To carry out disinfection, follow the steps below:

- 1) press the **P2** button for 4 seconds > the icon will flash together with key **P1**;
- 2) confirm the operation by pressing the **P2** key once again, within 5 seconds: to confirm within this limit, the function will abort and the panel will return to its normal state.

During the disinfection phase, the backlighting system of all icons is flashing. No other operations can be performed during disinfection, which will end automatically after 10 minutes. If the water level is low during disinfection, the function will end.

When the tub is empty and the disinfection completed, the said state of the display will turn off after 2 min from the end of operations, for safety reasons (10mins + 2 min safety).

CAUTION: during the disinfection, there should be no people in the tub.

For details on how to fill the disinfection tank, please see page below.

Key P3: With power and water level not necessarily present, pressing this button activates the **Airpool** function, the backlight of the icon changes from dimmed white to bright white. If you want to turn off the feature, press the key again or it will turn off automatically after 20 minutes of operation. The Airpool function starts by default at maximum speed; to make adjustments press the keys **P4a** and **P4b** (below).



Keys P4: With **Airpool** function and the adjustment mode enabled, to vary the speed of the blower you must press the keys **P4a** and **P4b**.

P4a — The key **P4a** is disabled and its backlight is off if the blower speed is equal to the minimum value, and, conversely, **P4b** is disabled and its backlight is off if the blower speed is equal to the maximum value.

P4b +

There are 5 speed adjustment steps.

You can exit the setting mode by pressing the button **P3** or waiting for a few seconds.

RADIO REMOTE CONTROL - HOW TO USE

Blowing After The **blowing after** function (elimination of residual water from the pipes of the airpool) is enabled only after the level sensor has detected the presence of water in the tub for at least 2 minutes. Will be activated **automatically** after the level sensor (5 cm over the nozzle) has not detected water for at least 12 minutes. Consists of the following steps:

- turn on the blower at minimum speed
- bring the blower at full speed with a 15 second ramp
- maintain maximum speed for 75 seconds
- disable the blower

During the *blowing after*, the button **P3** has dimmed white backlight. You can stop blowing after using the **P3** button for more than 1 second. Once activated, the function is completed even if water is detected.

Key P5: By pressing **P5** you will start the colour therapy cycle in which the colours change automatically at regular intervals, or a monochrome spotlight turns on (depending on the tub). The key backlight of key **P5** switches from dimmed white to intense white and automatically turns on the P6 key (*see the specifications below*).



The colour range consists of 8 colours (from white to purple), which light up cyclically. A complete cycle lasts 2 minutes, 15 seconds for each colour.

To switch the function off, press and hold the button **P5** again, or it will turn off automatically after 30 minutes.

Key P6: The key **P6** can be used only after activating the key **P5**. This button allows you to change the colour by hand; it turns on even in the absence of colour-therapy, but it will not work in this case. By pressing the key **P6** you will lock the automatic colour therapy cycle, switching to colour change in manual mode and the icon switches from blinking to fixed; subsequent pushes allow you to choose one colour at a time, within the same range as that described for the key **P5**.



To disable this function, press the key **P5**, turning off the lights.

Keys P7, P8^a - P8^b: *Not covered in this manual.*



Key P9: *It allows you to adjust the volume of any sound system, not covered in this manual.*



The icon is also used to report:

_ The state of battery charge in a proportional logic, according to the following criteria:
_ 1 dash low charge/4 dashes fully charged. You can view it upon exiting from STAND-BY mode for about 3 seconds.

_ The status of receiver signal search, with dashes blinking blue.

RADIO REMOTE CONTROL - HOW TO USE

Key TN: The hidden key TN is placed to the left of the company's logo. By pressing and holding it, the remote control will be switched off completely. You can restart it by pressing again the hidden key until the backlight of the icons is restored.



Led S1: The S1 signal icon displays only the status of the temperature regulator (which is activated/deactivated with the button P1):



- _ blue if on;
- _ off if deactivated.

Led S2: The S2 signal icon displays the status of the water level, set by default to about 5 cm above the level of the nozzles, according to the following criteria:

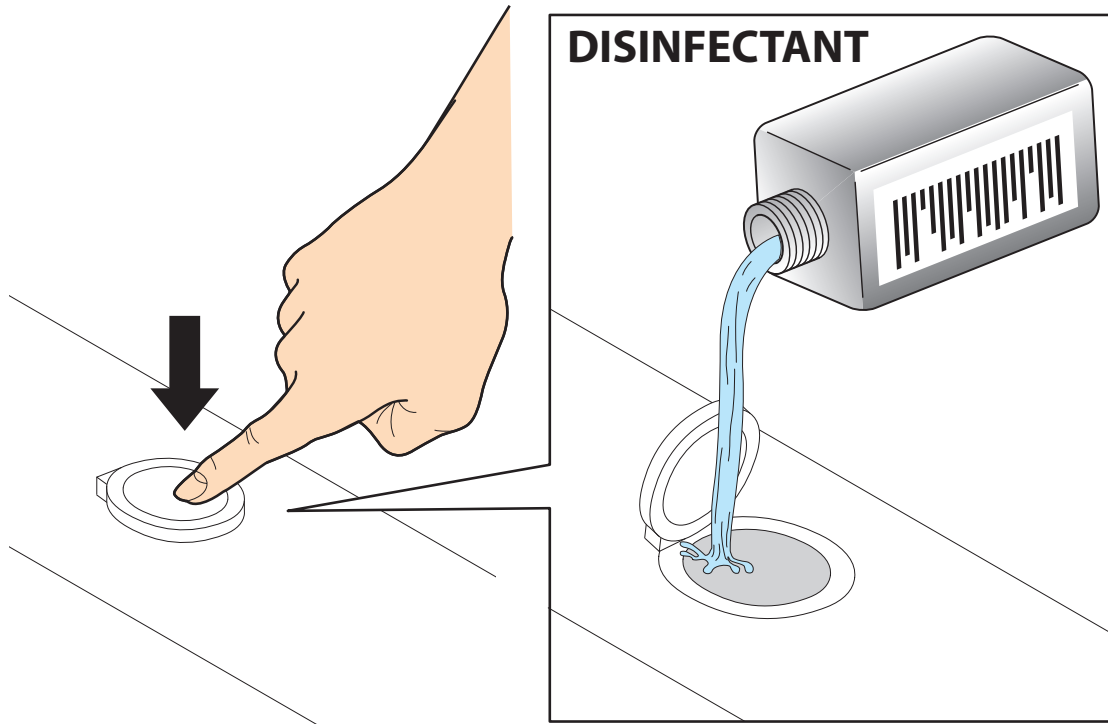


- _ blinking blue if not present;
- _ fixed blue if present.

NB: *the key P7, if pressed and held down, cancels the association of the radio controller with the receiver, followed by the sequential ignition of key P3; while holding the latter, you will end the dissociation process. If the radio controller were to dissociate itself from the receiver, only the icon of key P4^b will turn on, by holding down the same key you will start the re-association process.*

_DISINFECTION

The disinfection function is an automatic procedure of cleaning of the entire water circuit of the tub, including the tanks. This function is enabled after every use of the tub or after prolonged periods of inactivity of the same



On the tub, there is the cap of the tank for disinfection.

The cap can be opened by push&pull, allowing you to fill itg with liquid for disinfection. It is recommended to use a NON chlorine-based disinfectant liquid product.

For details about how to use the disinfection function, see page 9 (key P2).

_CLEANING AND MAINTENANCE

GENERAL SURFACE CLEANING

Common cleaning products such as neutral liquid cleaners can be used for regular cleaning of surfaces. It is advisable to apply the product with a soft cloth, rinsing thoroughly with water.

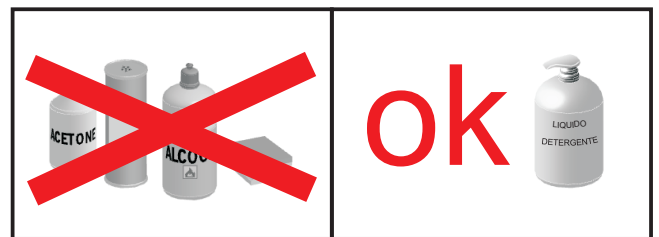
Do not use, under any circumstances, any anti-limescale product. Their alkaline composition may damage the surfaces

- IT IS ABSOLUTELY FORBIDDEN TO USE ABRASIVE PRODUCTS

ALCOHOL-BASED PRODUCTS, ACETONE OR
OTHER SOLVENTS.

- IT IS FORBIDDEN TO USE

ABRASIVE OR WIRE SPONGES.



MAINTENANCE

Carry out the maintenance of your tub on a regular basis; this will maintain the surfaces and the functional parts of the same in optimal conditions and will also ensure maximum hygiene and safety when using your tub.

For maintenance, use only the products mentioned above.

Before carrying out any maintenance work, disconnect the equipment from the electricity supply and from the water supply.

Interventions, tampering with or alterations not expressly approved in this manual, which do not comply with the provisions laid down in this manual may lead to damages, injuries or death and will void the warranty.

treesse